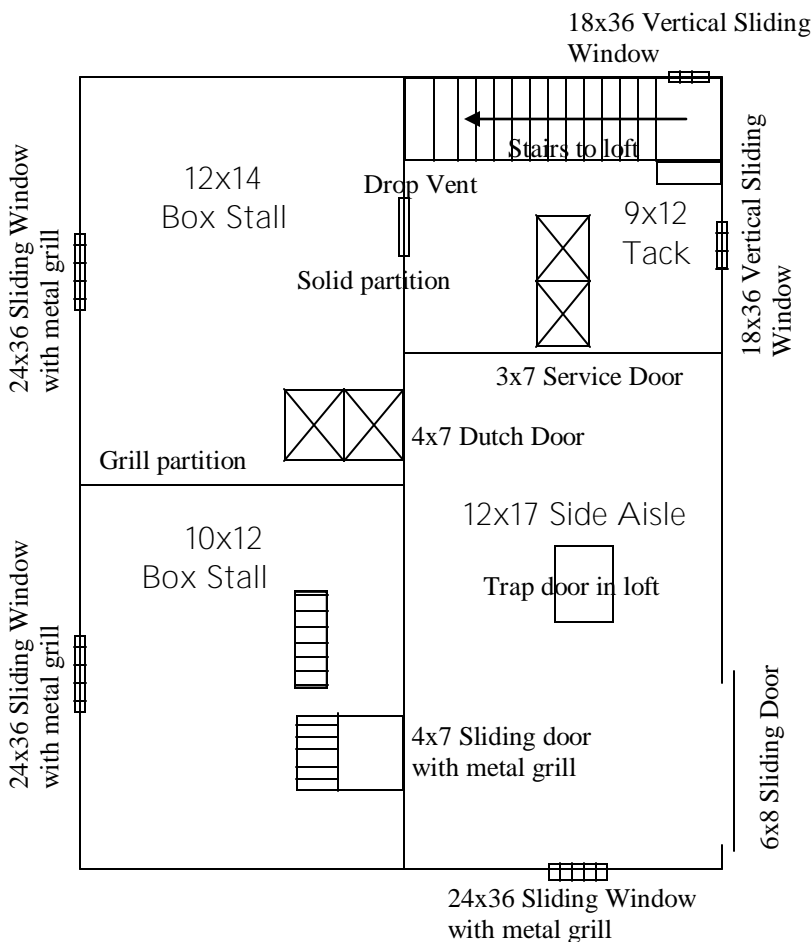




3700 Rte. 14 • Himrod, NY 14842 • 866-WOODTEX • www.WOODTEX.com

24'x24' Hinged Roof Horse Barn



* Drawing Not To Scale

STALLS:

- 4'x7' Sliding Doors (5 styles to choose from!) or 4'x7' Dutch Door (4 styles to choose from).
- Powder Coated Steel Stall Front Grill (only on stalls that have enough space adjoining aisle).
- 24"x36" Sliding 9 Lite Window with powder coated steel bars
- Oak kickboard 4' high OR 2x8 Southern Yellow Pine T&G Kickboard
- Solid or Grill Partition between stalls

FIRST FLOOR:

- 8' 6" Ceiling Height
- 6"x6" Pressure Treated Timbers for base
- 4"x4" Solid Oak Posts
- 2"x4" Solid Oak Beam Framing
- 2x10 Headers
- White Pine Board and Batten Siding
- Tack/Feed Room includes:
 - Wood floor,
 - 3'x7' Service Door
 - (2) 18"x36" Vertical Sliding Windows with Screens
 - Drop Vent into adjoining stall
 - Staircase to second floor
- Aisle Includes:
 - 2x8 SYP Tongue and Groove Wall Paneling on stall fronts
 - 6'x8' Sliding Barn Door
 - 24x36" Sliding 9 Lite Window with powder coated steel bars

SECOND FLOOR:

- (2) 18"x36" Vertical Sliding Windows with Screens on gable end
- (1) 4'x5' Access Door on opposite gable end
- 2x6 Loft Joists, 16" on center
- 3/4" Tongue and Groove OSB Flooring
- 32" Square Trapdoor on hinges
- 2x6 Rafters
 - 16" on center with 1/2" Roof Sheeting for shingles
 - 24" on center with 2x4 Perlins 24" on center for metal
- 40 Year Painted Metal Roofing
- OR**
- 30 Year Architectural Shingles
- 12" Overhang on Gable Ends
- 6" Soffit Overhangs