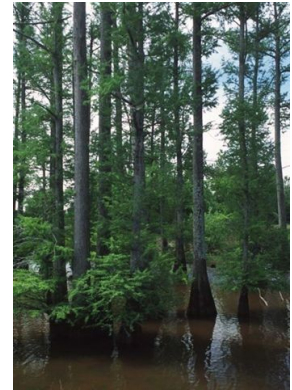


Cypress Siding

Wood-Tex Products now offers Cypress Board and Batten Siding on any of their Shed Row Horse Barns, Modular Horse Barns, Run-In Sheds, and even Storage Sheds!

Use 1x10 Cypress Board and Batten siding on any shed or simply replace the 1x10 Eastern White Pine Board and Batten siding which comes standard on any Horse Barn!



Cypress What?

Also known as *Taxodium Distichum* (Wikipedia, anybody?) **Cypress is noted for it's consistency, density, hardness and relative lack of knots.** While Cypress has always been an architectural fixture in its main growth regions, **many builders throughout the U.S. are using Cypress in what have traditionally been cedar, redwood and treated pine applications!**

Cypress Why?

The oils in cypress' heartwood make it one of the most durable woods when exposed to moisture conditions causing decay. Also Cypress is naturally termite and insect resistant. (Sound like the deep South?!) Cypress is the siding of choice for areas with high humidity, long periods of heavy rain and moisture.

Cypress Where?

Popular uses: Exterior siding, fence posts, decks, shingles, trim and landscape design elements. Cypress is mostly grown in the south, primarily in wet, swampy areas along the Atlantic Coastal Plain, the Gulf of Mexico and the Mississippi Valley.

Cypress How?

Cypress trees are conifers, but unlike most American softwoods, the trees are deciduous trees that shed foliage in the fall like hardwoods. Although Cypress is a softwood, **Cypress grows alongside hardwoods and traditionally has been grouped and manufactured with hardwoods.**

Cypress Now!

Whether you live in the deep south and are concerned about Termites, Insects and Moisture or simply want a more Durable, Hardwood-like siding material Cypress is a long-lasting, low maintenance, beautiful option!

